

# CAPTURE

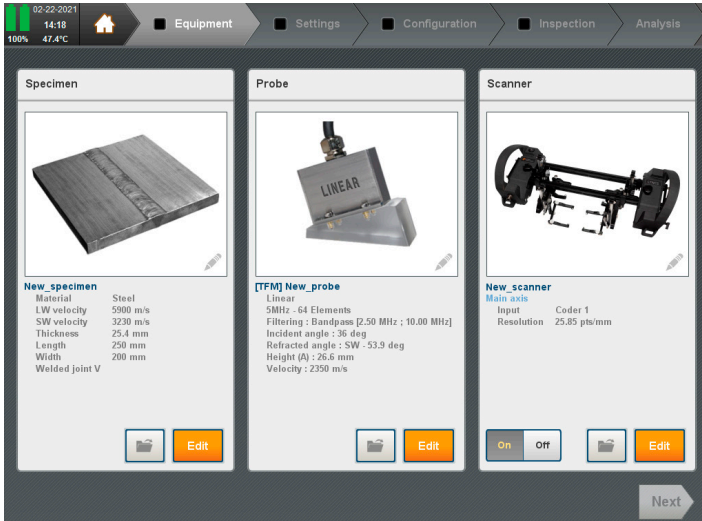
Be the best inspector you can be



Streamlined phased array  
ultrasonic testing software for Gekko<sup>®</sup>,  
Mantis<sup>™</sup>, Panther<sup>™</sup> 2 and PC.

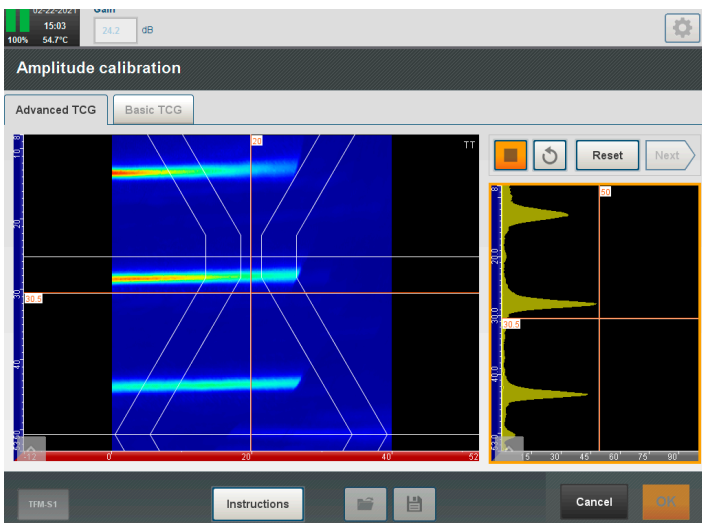
# ADVANCED PHASED ARRAY FOR ALL-LEVEL INSPECTORS

Capture™ provides a quick way to improve knowledge and remains focused on speeding up analysis while respecting inspection requirements.



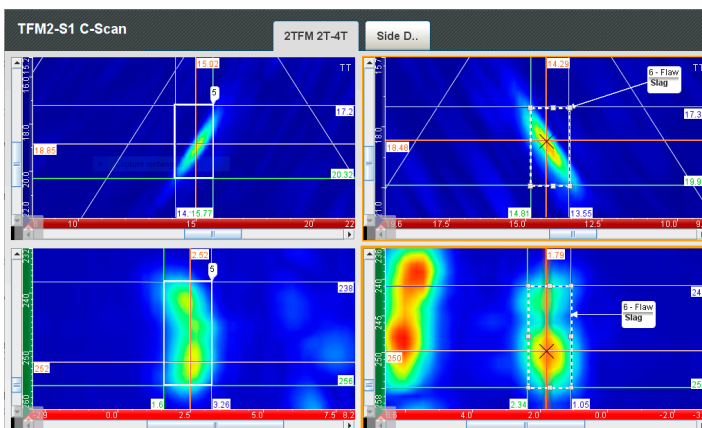
## One ultrasonic testing software from setup to reporting

- Application-oriented wizards
- Complete probe, wedge, and scanner libraries
- Custom probe creation, including Dual Linear Array (DLA)/ Dual Matrix Array (DMA) probes
- CIVA-based focal law calculator
- Full scan plan for procedure compliance
- Analysis and customizable inspection report



## Unique 3-click calibration wizards

- Part and wedge velocity calibration
- Amplitude balancing and dead element check
- Wedge delay and angle calibration—including AOD/COD wedges
- Beam balancing for PAUT sensitivity calibration (Angle Corrected Gain or ACG)
- Innovative Time Corrected Gain (TCG) calibration—including Total Focusing Method (TFM)

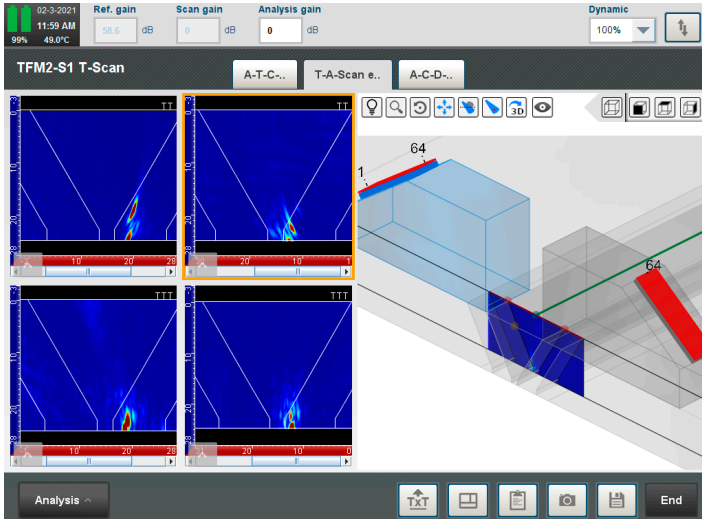


## Analysis made simple

- Complete set of views and custom layout edition
- Accurate geometry display for better assessment
- Auto-detection and sizing for corrosion and welds
- Customizable indication table and readings
- Data stitching for corrosion mapping
- Inspection report customization and export (PDF and Excel)
- Assisted analysis for butt weld inspection

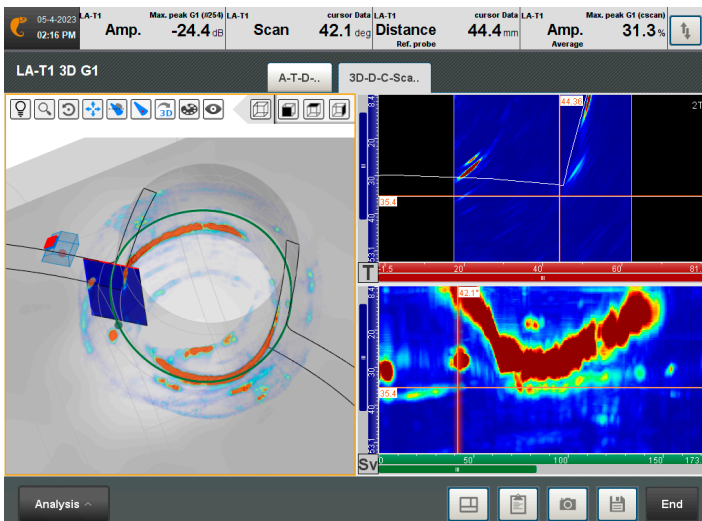
# INNOVATION BROUGHT TO THE FIELD

Benefiting from over 10 years of experience with TFM, Capture combines challenging requests from customers in the field with disruptive innovations.



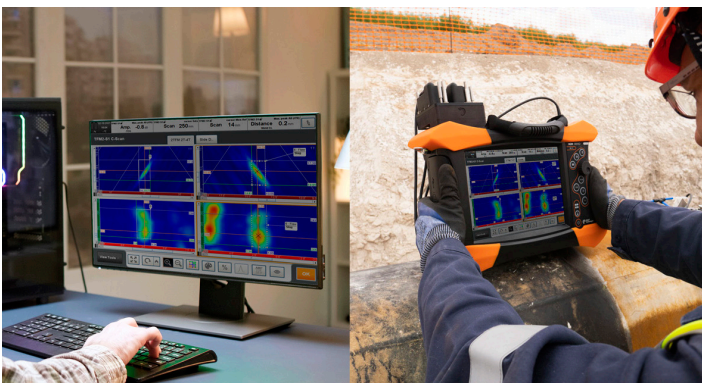
## TFM for the field—our DNA

- Multi-probe, multi-group, and multi-mode configurations
- FMC, sparse, PWI transmission modes, FMC recording, and Phase Coherence Imaging (PCI) technique
- Linear, matrix, DLA, DMA probes, and face-to-face probe configurations
- Grid verification tool compliant with ASME-V/ISO 23865
- Typical 25 mm/1 in weld inspection from both sides up to 130 mm/sec (5 in/sec)
- Acoustic sensitivity map based on CIVA simulation



## Application-oriented solutions

- Capture nozzle inspection with 3-axis scanner
- Fillet welds (T, Y) with multi-skip ray tracing
- True 2D CAD component import
- Embedded scanner controls (RMS PA, LYNCS, etc.)
- Paintbrush 2D mapping with 3-axis rotating arm
- Unique Adaptive TFM (ATFM) solution for wavy surfaces



## Connect your Capture

- Version manager and remote update from the cloud
- File sharing and remote control through Ethernet/wireless
- Multi-instance Capture PC
- Compatible with analysis software (CIVA Analysis, Ultis, NTPlot...)

	GO GEKKO	GO MANTIS	PRO PANTHER	CPN PC	PRO PC
<b>Setup &amp; Inspection</b>					
UT, PAUT, TOFD techniques	•	•	•	•	•
TFM technique	•	•	•	•	•
Plate, pipe with weld overlay and HAZ	•	•	•	•	•
DXF overlay import (CIVA, ES BeamTool)	•	•	•	•	•
Advanced geometries (nozzle, fillet weld, True 2D CAD)	•	•	•	•	•
Scan plan with multi-skip, crossing angles and near field display	•	•	•	•	•
Sectorial, linear, compound scan, and LAW import (CIVA)	•	•	•	•	•
Multi-group configuration settings (up to 8)	•	•	•	•	•
3-click calibration wizards	•	•	•		
Data acquisition up to 3 encoded axis	•	•	•		
<b>TFM Toolbox*</b>					
FMC/sparse TFM with linear, matrix, DLA, DMA probe	•	•	•	•	•
PWI/TFM with linear, matrix, DLA, DMA probe	•		•	•	•
PCI technique	•	•			
Max TFM aperture (channels)	128*	64*	128*	128	128
Multi-group, multi-mode, multi-probe (up to 4)	•	•	•	•	•
Max number of pixels per group	500k	225k	1M	500k	500k
Face-to-face probe configuration	•	•	•	•	•
ATFM module	••		••		
TCG calibration & grid verification (amplitude fidelity)	•	•	•		
Acoustic sensitivity map	•	•	•	•	•
FMC recording	•	•	•		
<b>Data Analysis &amp; Reporting</b>					
Cursor position	•	•	•	•	•
Zoom & full screen	•	•	•	•	•
A-, B-, C-, D-, E-, S-, T-Scan, echo-dynamic views	•	•	•	•	•
Amplitude dynamic range-16 bits	•	•	•	•	•
Top view, side view, 3D view	•	•	•	•	•
Customizable layout edition	•	•	•	•	•
Editable readings banner & indication table	•	•	•	•	•
Offline gate & thickness edition	•	•	•	•	•
TOFD tools (wedge delay, PCS, LW synchro, and removal)	•	•	•	•	•
Customizable inspection report (PDF/Excel export)	•	•	•	•	•
Indication auto-sizing (amplitude/thickness)	•	•	•		•
Offline 2D gates for TFM	•	•	•		•
Assisted analysis for butt weld	•	•	•		•
C-Scan stitching and data merging	•	•	•		•
3D multi-group display & data rendering	•	•	•		•
Advanced indication table and indication merge	•	•	•		•

• According to the Package      •• Add-on module sold separately

The information in this document is accurate as of its publication. Actual products may differ from those presented herein. © 2023 Eddyfi Technologies, Eddyfi, and their associated logos are trademarks or registered trademarks of Eddyfi Canada, Inc. in the United States and/or other countries. Eddyfi Technologies reserves the right to change product offerings and specifications without notice. Eddyfi Technologies is a Previa Business Unit.